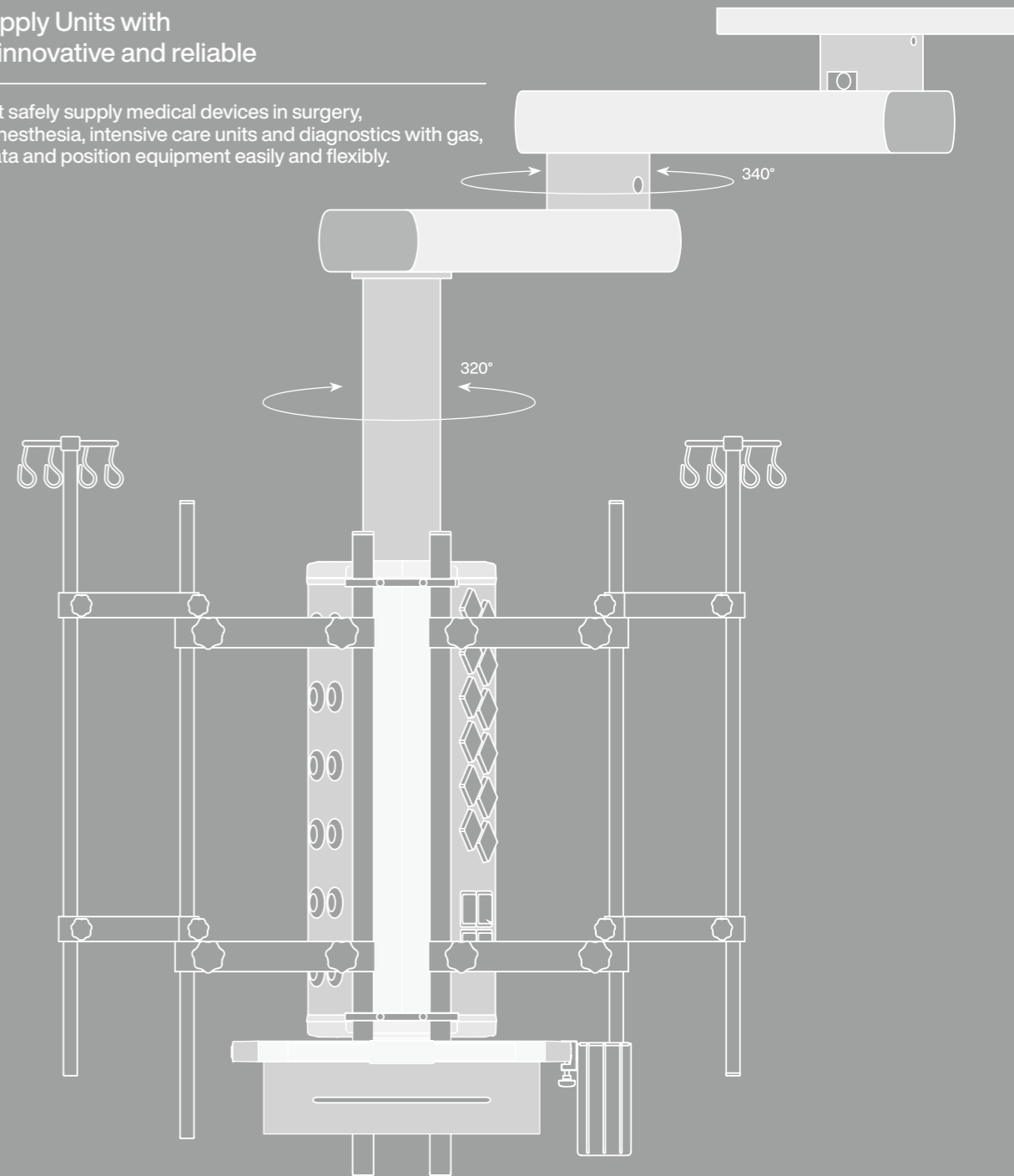


# LUVIS Pendant

Ceiling Supply Units with  
Powerful, innovative and reliable

Luvis Pendant safely supply medical devices in surgery, endoscopy, anesthesia, intensive care units and diagnostics with gas, power and data and position equipment easily and flexibly.



 DENTIS

DENTIS : 6, Yuram-ro,  
Dong-gu, Daegu, Korea

T. +82 - 2 - 869 - 6020  
www.luvis.co.kr

D - C - LVSP - V1 - 202403 - ENG

COPYRIGHT@2024, DENTIS.co.,Ltd, ALL RIGHTS RESERVED.

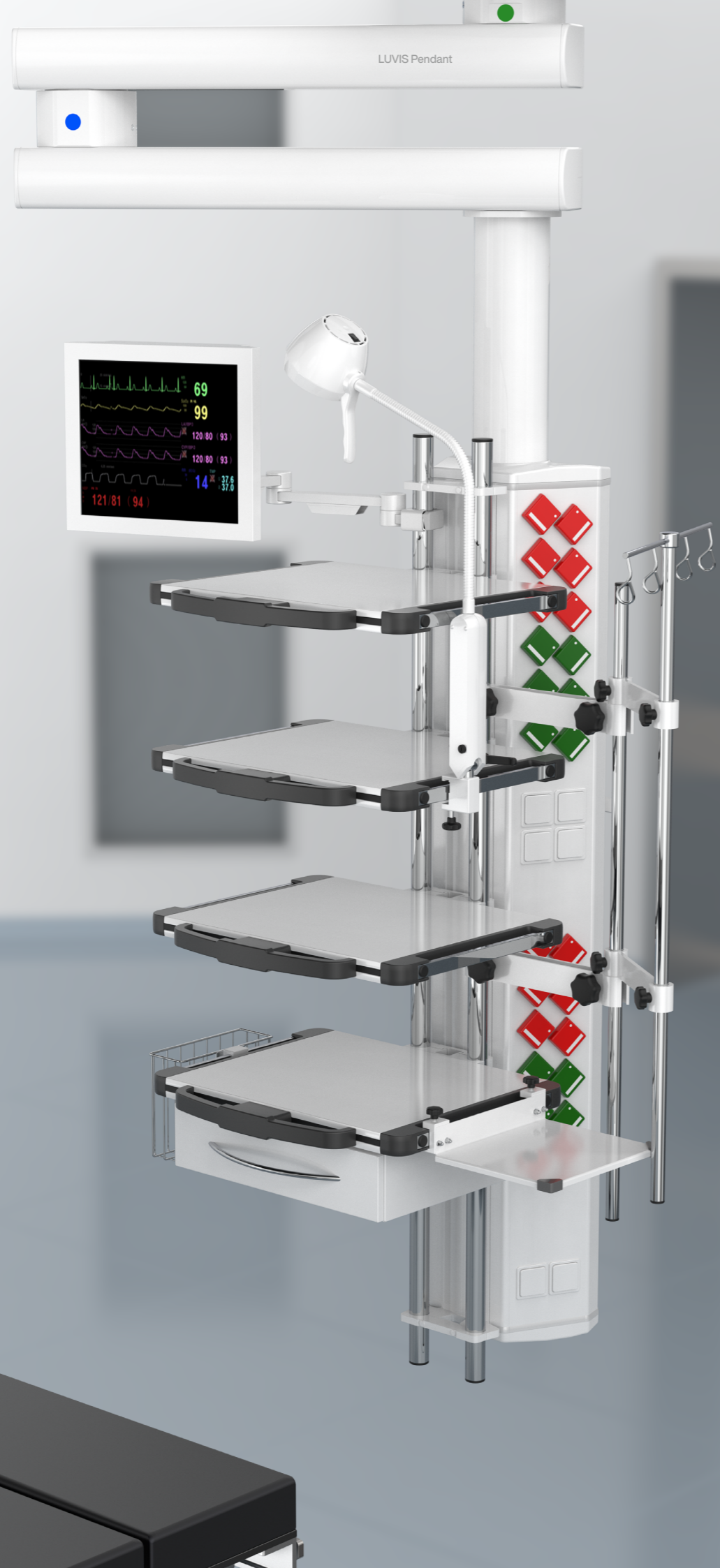
Ergonomically designed to provide optimal surgical positions,  
ensuring convenient and comfortable procedures for both surgeons and patients





Creative, Passionate, Reliable DENTIS

We aspire to become a leading Medical Solution company by providing the best products and services, pursuing the highest values for our customers, enabling humanity to lead healthy and happy lives



## Why do we need Ceiling Pendant Systems?

---

### Safety

- No cables/tubes on the floor for easy cleaning and disinfection
- No wall mounted connections creates improved hygiene environment
- Minimal risk of breakage of cables/tubes due to accidental tripping
- Minimal risk of disconnections of cables/tubes due to un-intentioned pull out

### Improved workflow

- Easy maneuverability of multiple devices with a single movement
- Integration of all connections at single station (electrical and gas)
- Better access to improve better patient care and ease of transportation



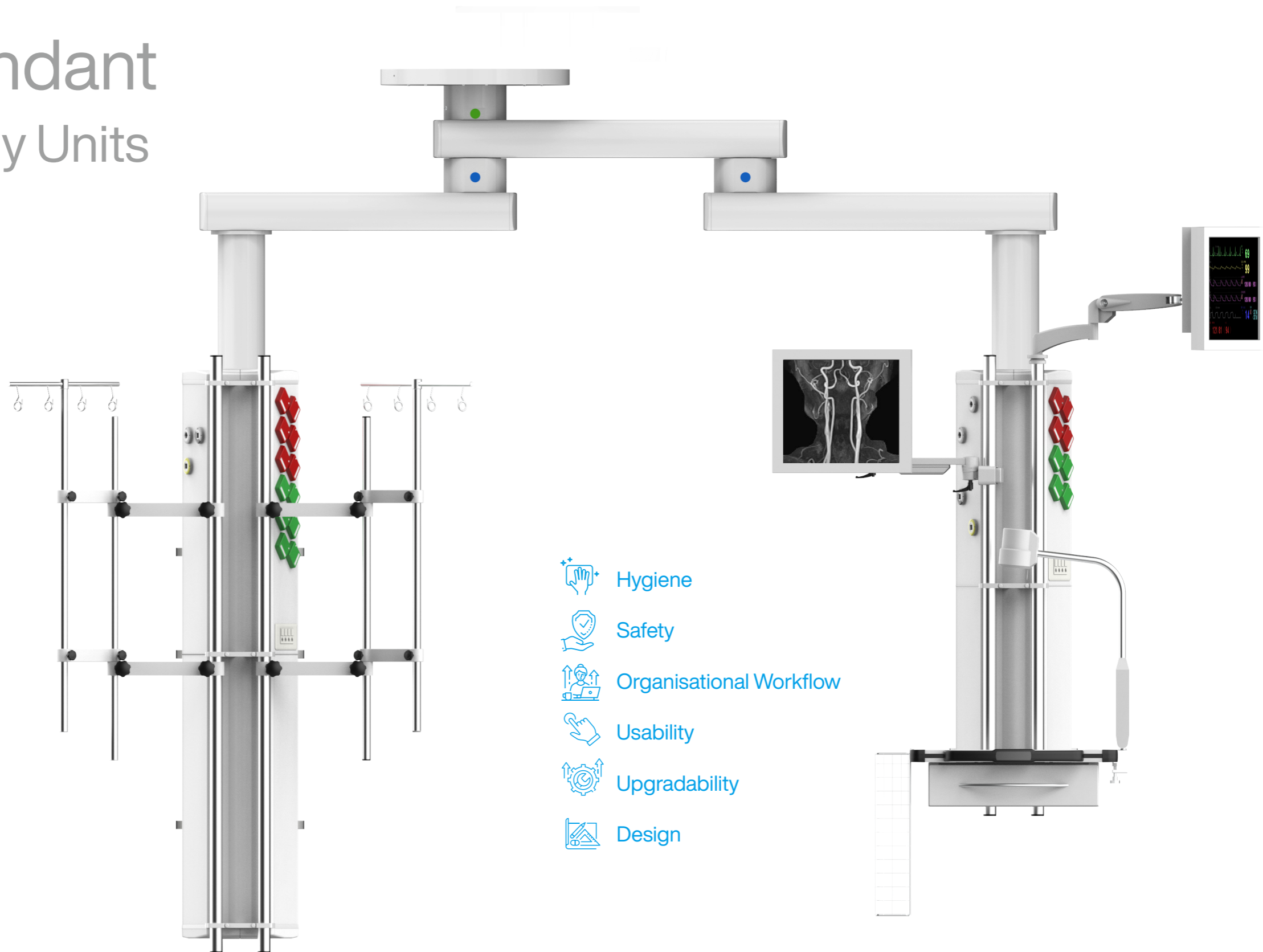
# LUVIS Pendant Ceiling Supply Units

## Designed for various applications

- ICU
- OR/Hybrid-OR/Integrated OR
- Recovery Room
- Endoscopy Center
- Sterilizing Room

## Capability of carrying equipment

- Patient Monitor
- Endoscope
- Medical Monitor
- High Frequency Electrotome
- Breathing Machine



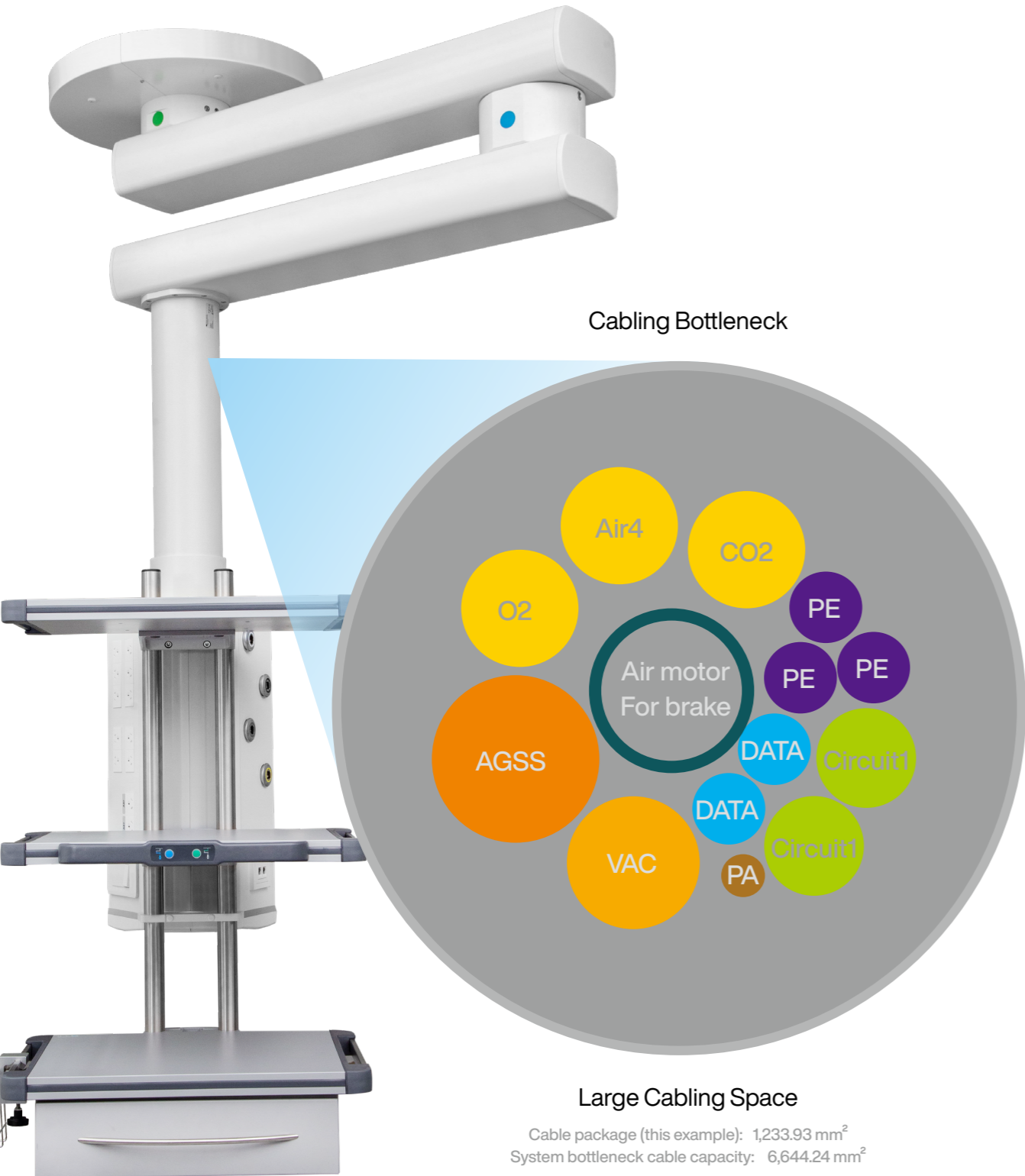
- Hygiene
- Safety
- Organisational Workflow
- Usability
- Upgradability
- Design



# Large Space for Routing

Updated cross-sectional area up to 17,393mm<sup>2</sup>. Convenient for pendant maintenance.

Bottleneck is 6,644mm<sup>2</sup> easy for routing all cables and gas hoses.



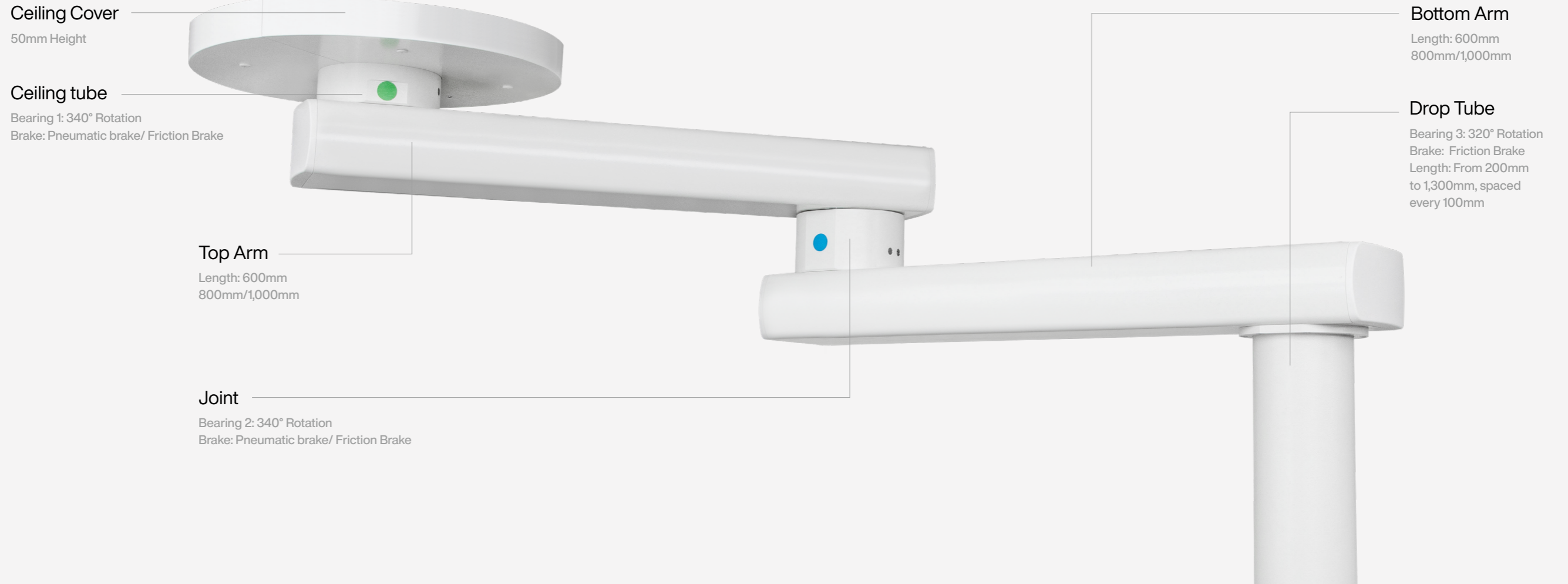
## Specification

Illustration	Quantity	Type	Diameter
	3	Gas	Ø12.2 mm
	1	Vacuum	Ø13.5 mm
	1	AGSS	Ø19.2 mm
	2	Supply Line(Live and Neutral), Electrical	Ø9.7mm
	1	Grounding, 2.5 mm <sup>2</sup>	Ø5mm
	2	Supply Line, Data	Ø6 mm (BNC as example)
	3	Grounding, 10 mm <sup>2</sup>	Ø6.4 mm
	1	Air Pipe, Pneumatic Brake	Ø12.9mm

# High Action Ranges and High Payload

Highest payload up to 580 kg.  
 Rotation angle of arm up to 340°, with cushioned stops.

## Ceiling Supply Units Specification



### Length Payload

600mm	580kg
800mm	420kg
1,000mm	320kg



### Length Payload

600+600mm	265kg
600+800mm	220kg
600+1,000mm	180kg
800+800mm	180kg
800+1,000mm	150kg
1,000+1,000mm	130kg

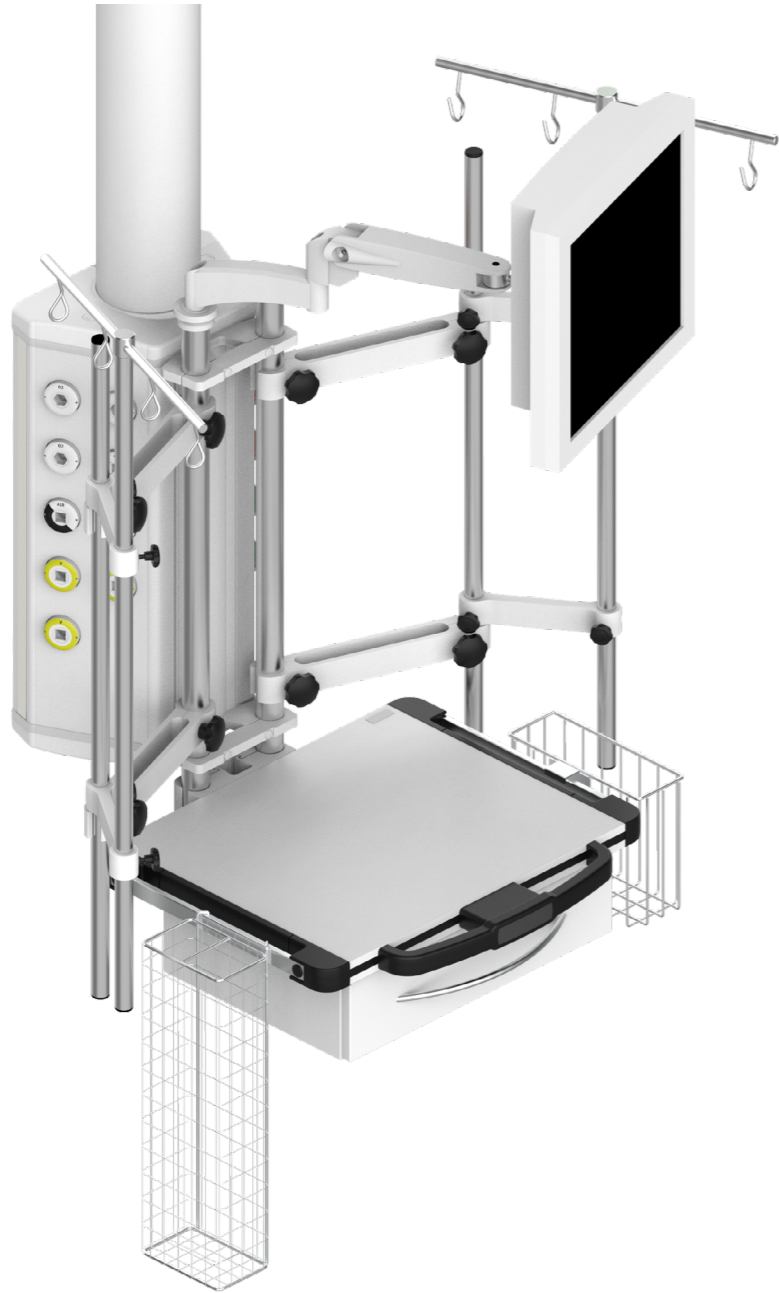
# LUVIS Pendant Heads

## HIGH FLEXIBILITY

Both suspension arm and straight tube system are available. Combined with vertical and horizontal design of service head and various accessories could meet all needs from terminal.

### Vertical Head

Endoscopy  
Surgery



### Horizontal Head

Anesthesia  
Perfusion



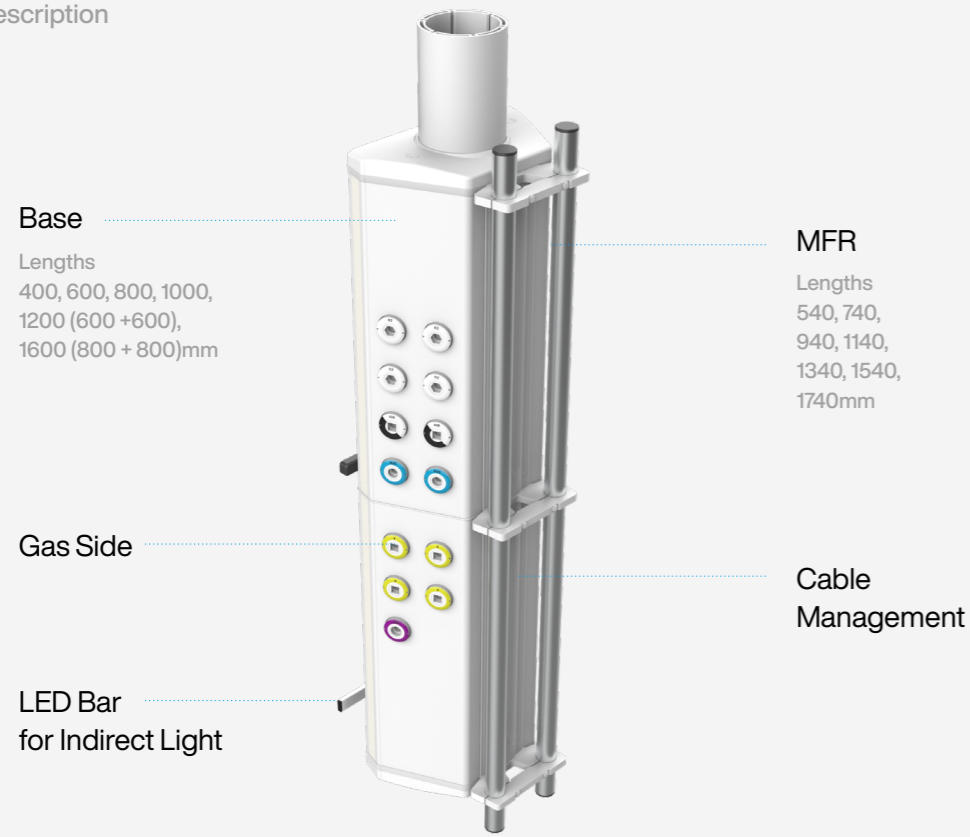
### Long Head

ICU  
NICU

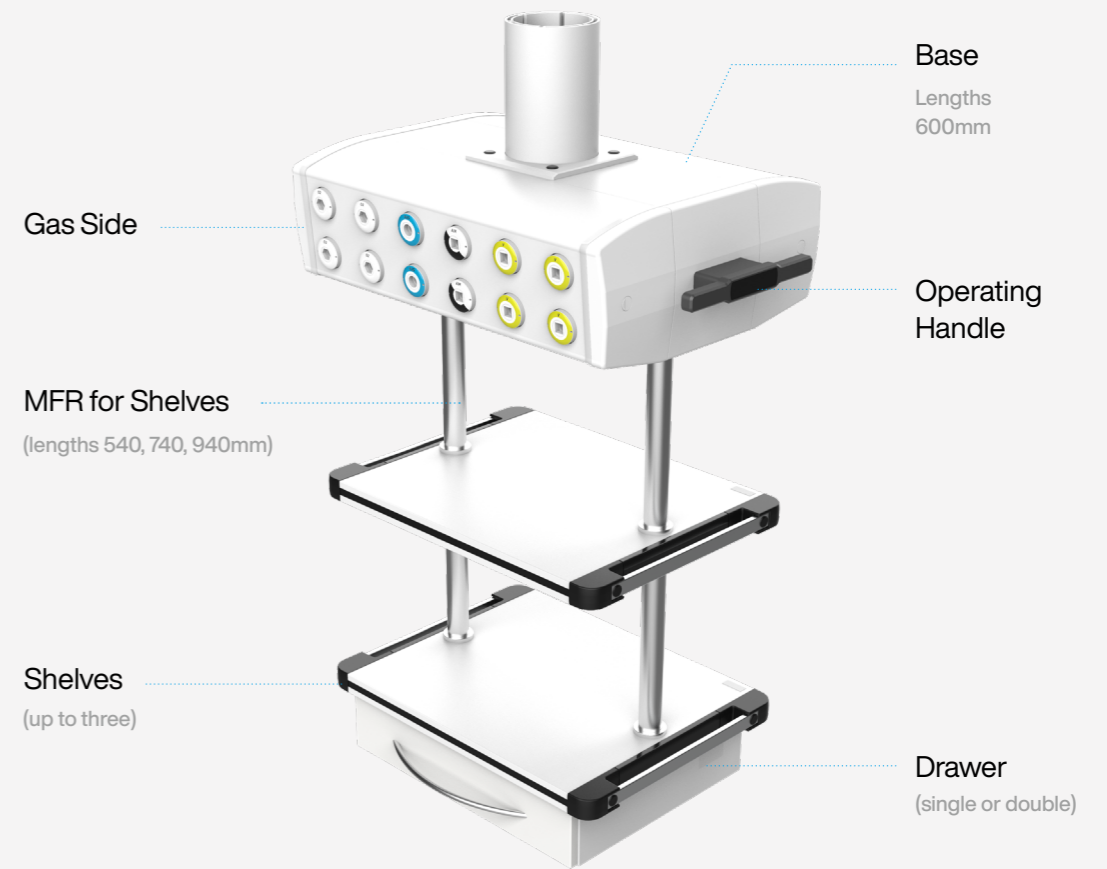


# LUVIS Pendant Heads

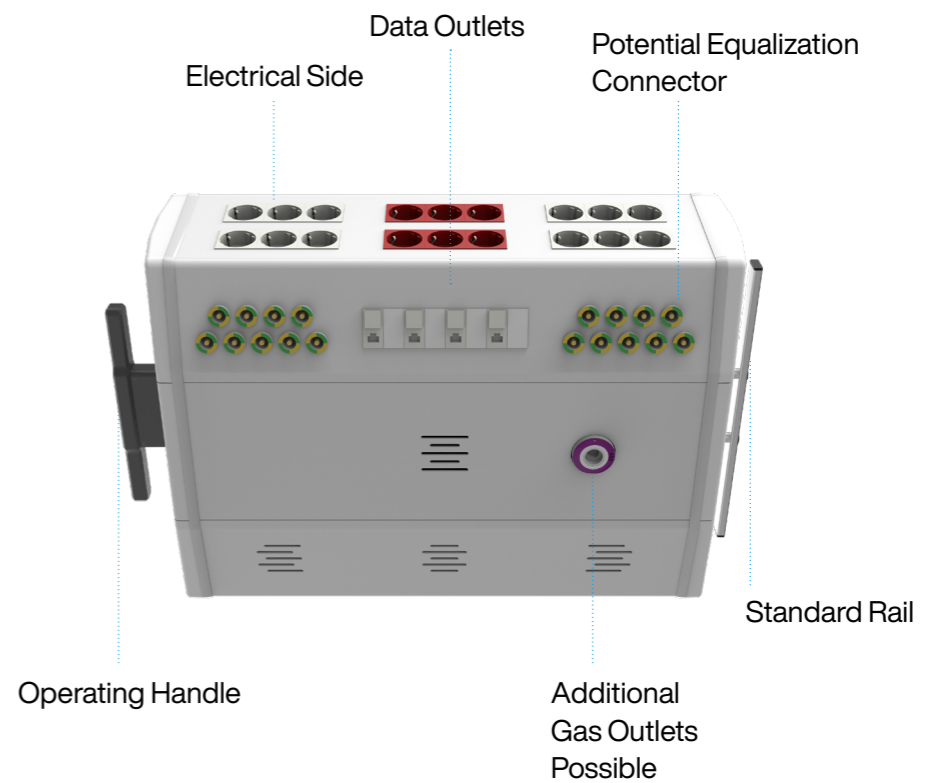
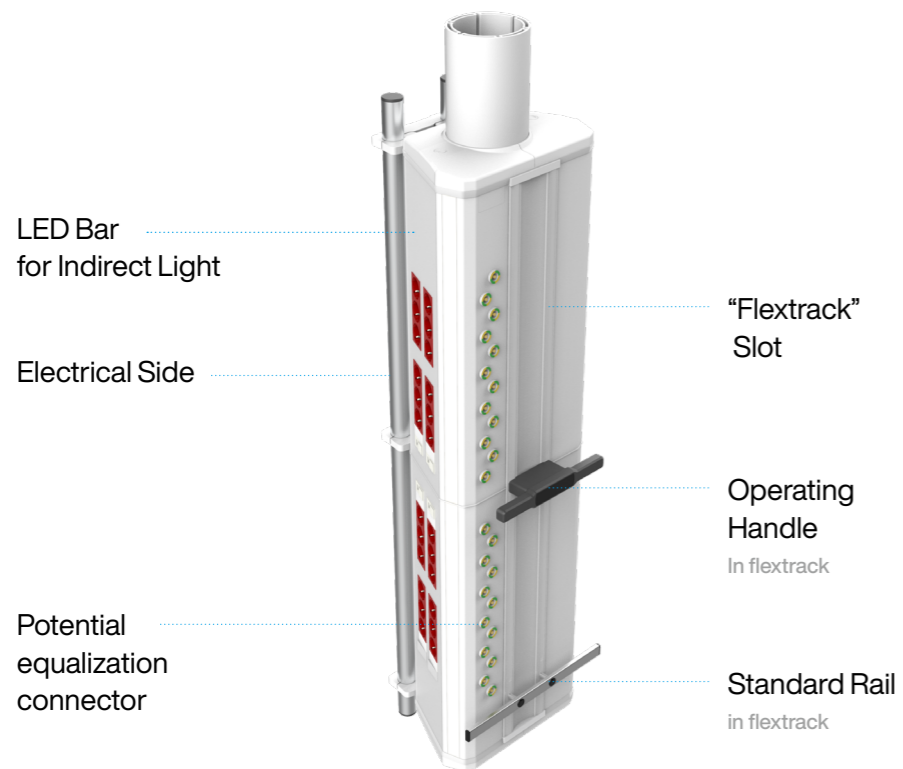
## Component Description



Vertical Head



Horizontal Head





# LUVIS Pendant Heads

Design your Work Space

## Operating of the Vertical Head / Suspension System

Articulate up/down and control pneumatic or electromagnetic brake with buttons

- Operating handle at shelf
- Operating handle attached to the Flextrack (3rd Gen handle with waterproof housing)



## Mounting of Accessories

All existing accessories such as IV holder, shelves, baskets can be mounted



- Multi Function Rack (MFR)**
- Current MFR
  - Stainless steel tubes Ø 38 mm
  - Maximum payload 180 kg



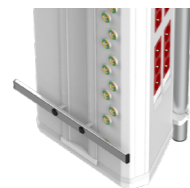
- Flextrack**
- Two profile rails on both sides of the aluminum body
  - Profile rail - slot nut connection



- 5-Sided Surrounding Rail**
- For Ø 38 mm tube
  - 1,030 mm total length of rail
  - Maximum payload 40 kg



- Rail at Shelf**
- 25 x 10 mm rail
  - 30 x 10 mm rail
  - 30 x 10 mm DuoFlex



- Rail at Head**
- 25 x 10 mm rail
  - 30 x 10 mm rail
  - Maximum payload 20 kg (centric balanced load)

# LUVIS Pendant Heads Specification Sheet

## Technical Specification / Ceiling Supply Unit

Beam type	Payload (kg)
Single Extension arm 600mm	580
Single Extension arm 800mm	420
Single Extension arm 1000mm	320
Dual Extension arm 600mm/600mm	265
Dual Extension arm 600mm/800mm	220
Dual Extension arm 600mm/1000mm	180
Dual Extension arm 800mm/800mm	180
Dual Extension arm 800mm/1000mm	150
Dual Extension arm 1000mm/1000mm	130
<b>Extension arm Brake</b>	<b>Pneumatic and mechanical brakes</b>
<b>Operating pressure of the brakes</b>	<b>Recommend operating pressure : 5 Bar Maximum : 6 Bar</b>
<b>Limit adjustment</b>	<b>Stops adjustable in 30-degree increments without removing the extension arm</b>
<b>Max Rotation scope</b>	<b>to 340° (with cushioned stops)</b>
<b>Noise Rotation scope</b>	<b>65db(A)(EN ISO 3746) are not exceeded</b>
<b>Operation Manual force</b>	<b>&lt;100N</b>
<b>Protection IP classification in accordance with IEC60529</b>	<b>IP20</b>
<b>Applicable standards</b>	<b>IEC 60601-1 Medical Electrical Equipment-Part 1 : General Requirements for Basic Safety and Essential Performance</b>
<b>Approved adaptations</b>	<b>M20 and approved end devices</b>
<b>Beam and bearing color</b>	<b>RAL 9010 in Fine Structure</b>





As we dream of becoming a company of a hundred years,  
DENTIS is actively shaping the future and drawing the blueprint for tomorrow.